

# Tractor Scoot

**GARDENERS**  
SUPPLY COMPANY

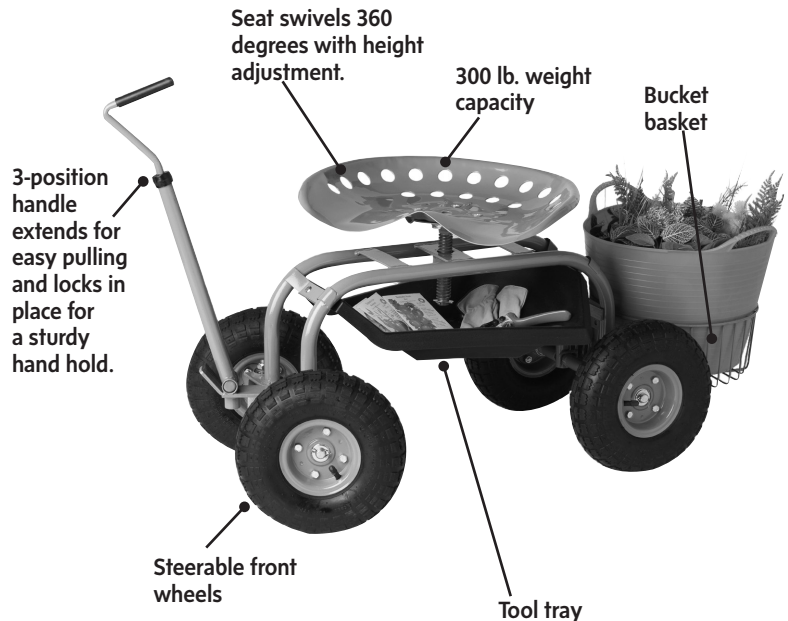
1-800-876-5520 • gardeners.com  
info@gardeners.com

Open the package and assemble the product outside or in a well-ventilated area. Natural rubber tires emit a slight but harmless odor at first.

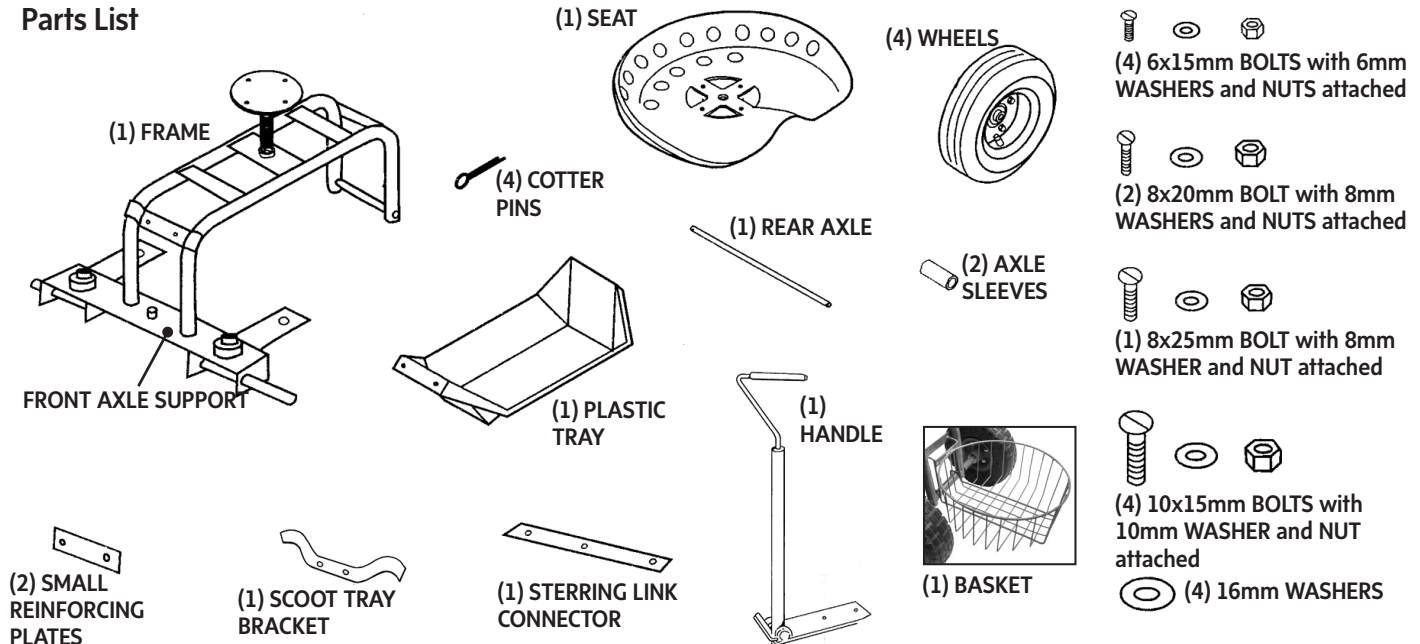
Identify and organize all parts before assembly (see Parts List below). You might want to use the Plastic Tray to hold the hardware during assembly. Some Washers and Nuts come attached to the Frame. They are not included in the Parts List.

## Tools Needed

Large flat head (slotted) screwdriver  
½" wrench or adjustable wrench  
Adjustable slip-jaw pliers



## Parts List



8% of our profits go back to our communities.  
Learn more at [gardeners.com/force-for-good](https://gardeners.com/force-for-good)

## Assembly Instructions

1. Place the STEERING LINK CONNECTOR (nub side up) onto the FRONT AXLE SUPPORT assembly. Secure with two 8x20 mm BOLTS, two 8mm WASHERS, and two 8mm NUTS as shown (Figure 1). Use slip-jaw (adjustable pliers) to hold the head of the bolt while tightening the nut with a wrench (Note that you'll first need to undo the nuts and washers from the bolts.)
2. Insert the REAR AXLE through the rear AXLE FRAME (Figure 1).
3. Slide one AXLE SLEEVE onto each end of the REAR AXLE (Figure 2, Exploded View). Slide a 16mm WASHER onto each end of the REAR AXLE, followed by a WHEEL (with valve stem facing out), then another WASHER. Take a COTTER PIN and slide both ends through the predrilled hole in the AXLE. Spread the ends apart to secure the pin.
4. On each end of the FRONT AXLE mount a 16mm washer, followed by a WHEEL (with valve stem facing out), then another WASHER (Figure 2). Take a COTTER PIN and slide both ends through the predrilled hole in the AXLE. Spread the ends apart to secure the pin. **Note:** AXLE SLEEVES are not used on the FRONT AXLE.
5. Remove the 8mm NUT and WASHER, and the large 16x32mm washer from the pre-welded bolt on the FRONT AXLE SUPPORT. Place the large washer over the pre-welded bolt, followed by the HANDLE and secure with the small washer and nut (Figure 2a). Use the 8x25mm BOLT, 8mm WASHER and NUT to attach the rear hole in the HANDLE to the nub referenced in Step 2. Hand tighten nuts. **Important:** Do not over-tighten bolts on the steering mechanism or the steering may "freeze up."

Figure 1.

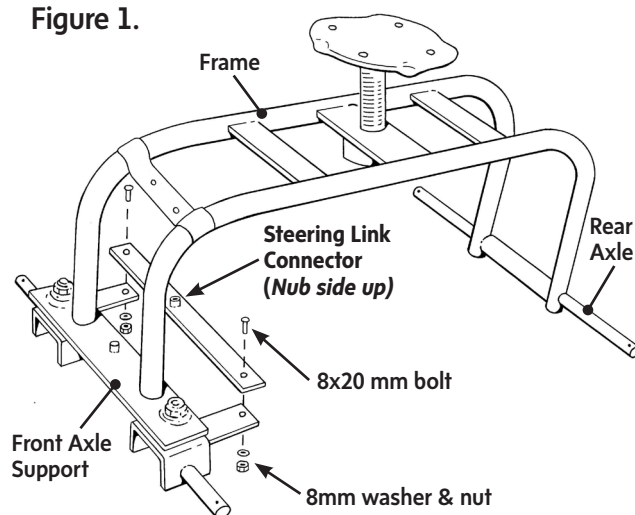


Figure 2a.

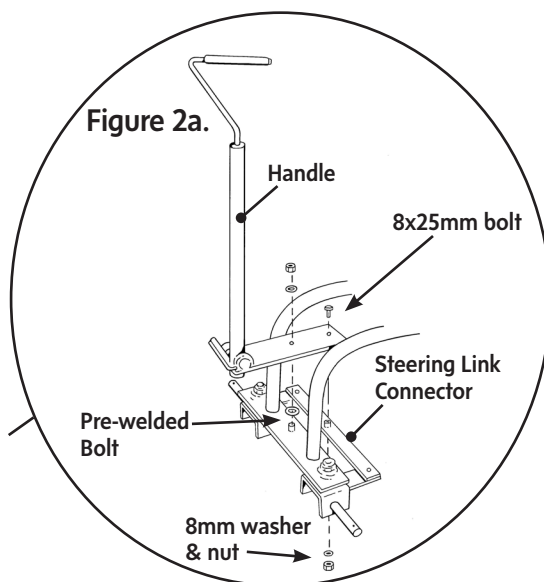
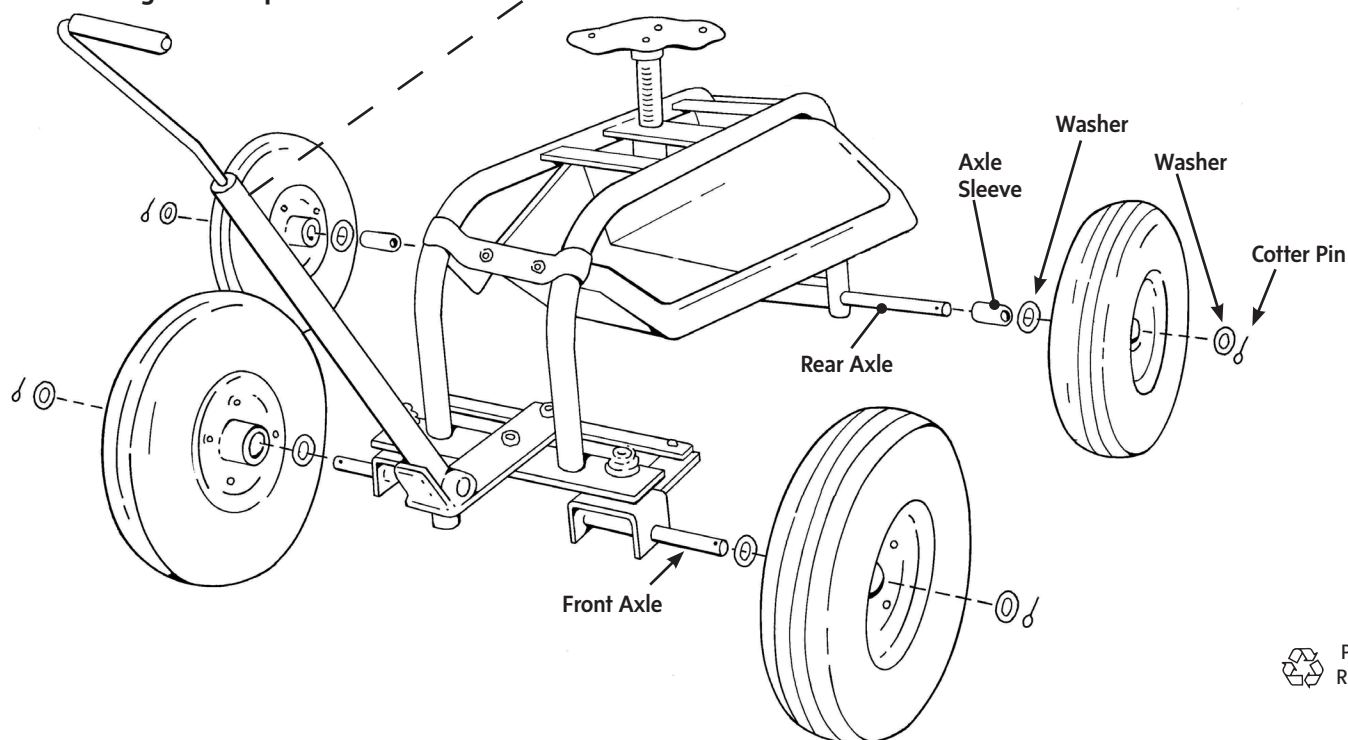


Figure 2. Exploded View



6. Pull the Tractor Scoot to make sure the HANDLE moves freely left and right. If the handle does not steer well or the pivot seems stiff, you may need to slightly loosen one or both of the nuts on the AXLE. When extended, twist the Handle to Lock it into place.

7. Using the small 6x15 mm BOLTS, 6mm NUTS and WASHERS, attach the TRAY (front first) to the FRAME using the SMALL REINFORCING PLATE. Place the plate under the front rim of the TRAY lining up the holes with the predrilled holes in the (pre-welded) front TRAY BRACKET (Figure 3). (It helps to rest the back of the TRAY on the back tires for support while lining up the parts in the front.) Hold each nut with a wrench or pliers while tightening each bolt with a flat head (slotted) screwdriver.

8. Attach the back of the TRAY using the SCOOT TRAY BRACKET and SMALL REINFORCING PLATE. Fully tighten all nuts on the TRAY (Figure 3).

Note: Predrilled holes through the floor of the TRAY allow rainwater to drain and keep tools from rusting.

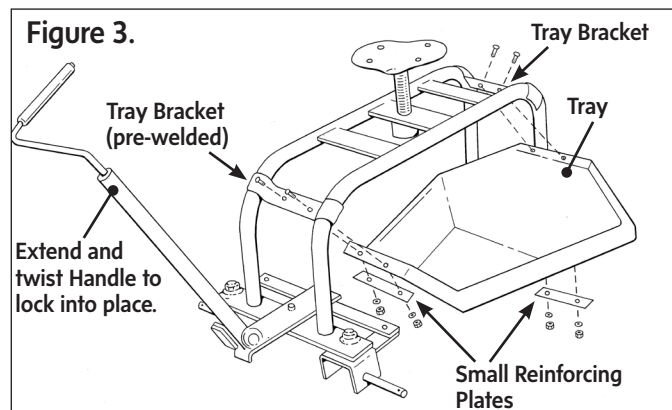
9. Position the top brace of the BASKET between the two bars on the tractor FRAME (Figure 4). Direct the two hooks on the lower part of the Basket to rest on the AXLE FRAME.

10. Attach the SEAT to the seat post with four 10x15mm bolts, 10mm nuts and washers. Use pliers and a flat head screwdriver to fully tighten the bolts in place. Note that the threaded stem of the seat post has a washer and cotter pin pre-installed. Check by looking under the SEAT to make sure the COTTER PIN is wrapped around the AXLE and secure (Figure 5).

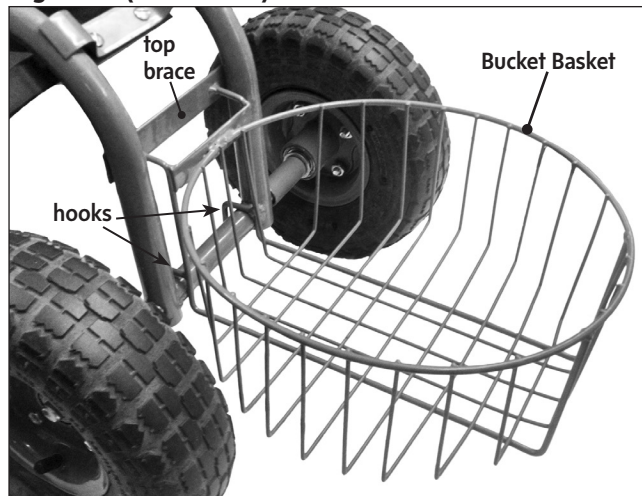
The Seat may be raised or lowered to a desired height simply by turning it clockwise or counter-clockwise. For the most comfort, we recommend adjusting the seat to a height where your feet rest level on the ground and your thighs are parallel with the ground.

### Safety Instructions

- Not for use or play by children.
- Test tire pressure before use. Keep tire pressure at, or just below the maximum pressure of 30 psi. Do not overinflate tires.
- Do not use on inclines as work seat may tip and cause injury.
- Do not load the work seat with more than 300 lbs.
- Do not load the basket with more than 40 lbs.
- Do not load plastic tray with more than 5 lbs.
- Do not operate if any part is damaged or broken.



**Figure 4. (Rear View)**



**Figure 5.**

